



浩畅半导体
www.szhaochang.cn

79L08 Three-terminal negative voltage regulator

SOT-89 Encapsulate Three Terminal Voltage Regulator

产
品
规
格
书

承
认
书

客户确认：

公司签章：

| | | | |
|----|-----|-----|-----|
| 部门 | 工程部 | 品保部 | 采购部 |
| 签名 | | | |
| 日期 | | | |

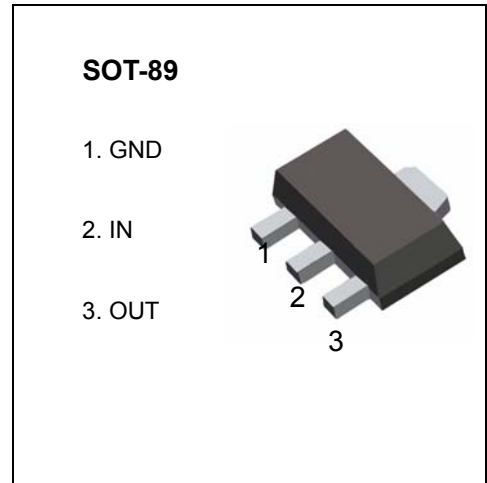


SOT-89 Encapsulate Three Terminal Voltage Regulator

79L08 Three-terminal negative voltage regulator

FEATURES

- Maximum Output current
 $I_{OM}: 0.1 \text{ A}$
- Output voltage
 $V_O: -8 \text{ V}$
- Continuous total dissipation
 $P_D: 0.5 \text{ W}$



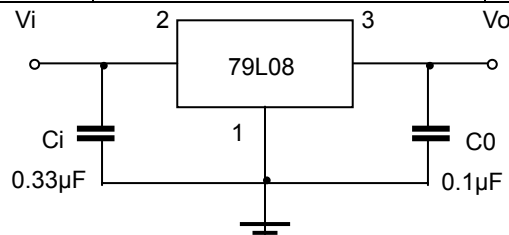
ABSOLUTE MAXIMUM RATINGS (Operating temperature range applies unless otherwise specified)

| Parameter | Symbol | Value | Units |
|--------------------------------------|-----------|----------|-------|
| Input Voltage | V_i | -30 | V |
| Operating Junction Temperature Range | T_{OPR} | 0~+125 | °C |
| Storage Temperature Range | T_{STG} | -55~+150 | °C |

ELECTRICAL CHARACTERISTICS AT SPECIFIED VIRTUAL JUNCTION TEMPERATURE ($V_i=-14V, I_o=40mA, C_i=0.33\mu F, C_o=0.1\mu F$, unless otherwise specified)

| Parameter | Symbol | Test conditions | MIN | TYP | MAX | UNIT | |
|--------------------------|--------------|------------------------------------|--|------|------|------|---|
| Output voltage | V_o | 25°C | -7.7 | -8.0 | -8.3 | V | |
| | | 0-125°C | $-10.5V \leq V_i \leq -23V, I_o=1mA \sim 40mA$ | -7.6 | -8.0 | -8.4 | V |
| | | | $I_o=1mA \sim 70mA$ | -7.6 | -8.0 | -8.4 | V |
| Load Regulation | ΔV_o | $I_o=1mA \sim 100mA$ | 25°C | 30 | 100 | mV | |
| | | $I_o=1mA \sim 40mA$ | 25°C | 15 | 50 | mV | |
| Line regulation | ΔV_o | $-10.5V \leq V_i \leq -23V$ | 25°C | 42 | 200 | mV | |
| | | $-11V \leq V_i \leq -23V$ | 25°C | 36 | 150 | mV | |
| Quiescent Current | I_q | 25°C | | 4 | 6 | mA | |
| Quiescent Current Change | ΔI_q | $-11V \leq V_i \leq -23V$ | 0-125°C | | 1.5 | mA | |
| | ΔI_q | $1mA \leq I_o \leq 40mA$ | 0-125°C | | 0.1 | mA | |
| Output Noise Voltage | V_N | 10Hz ≤ f ≤ 100KHz | 25°C | 54 | | uV | |
| Ripple Rejection | RR | $-11V \leq V_i \leq -21V, f=120Hz$ | 0-125°C | 37 | 46 | dB | |
| Dropout Voltage | V_d | 25°C | | 1.7 | | V | |

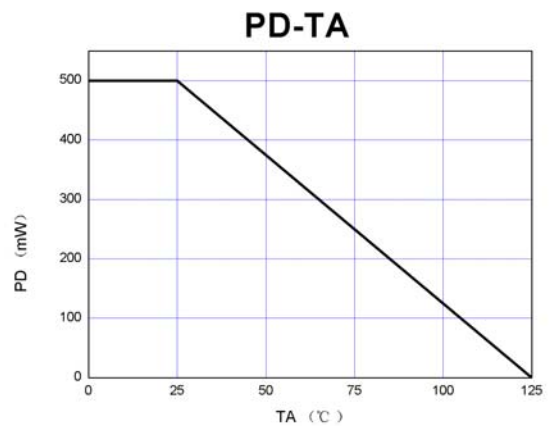
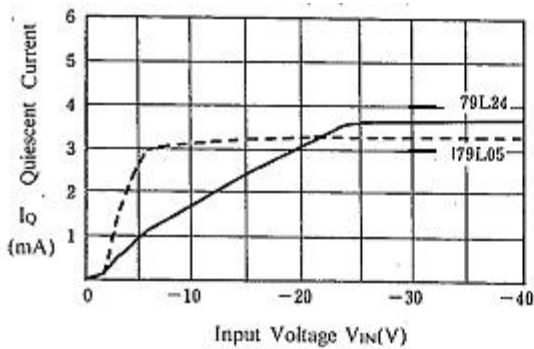
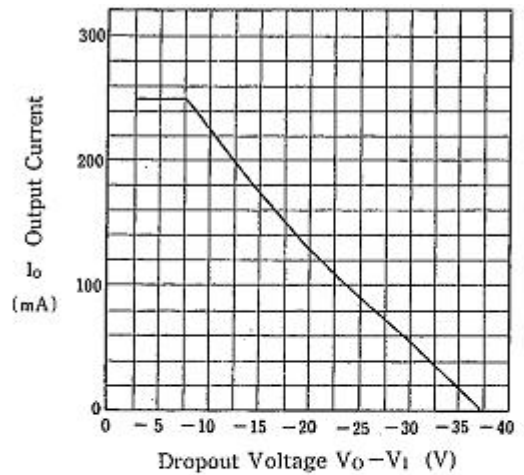
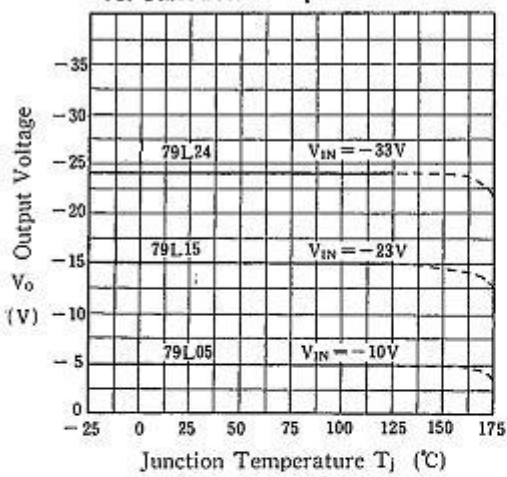
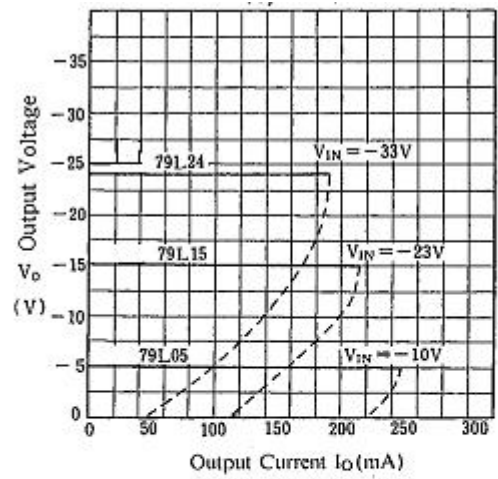
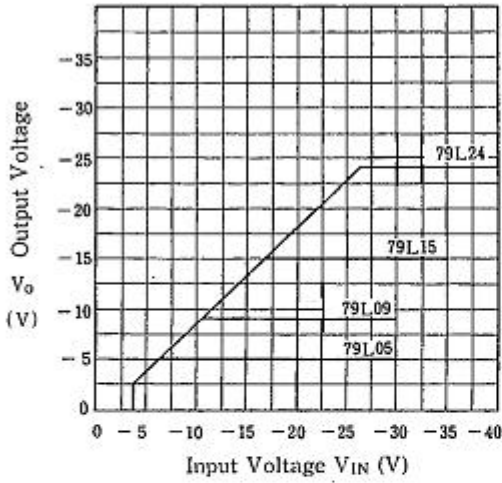
TYPICAL APPLICATION



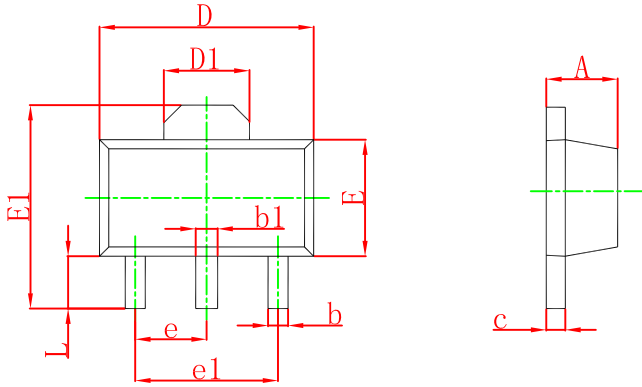
Note: Bypass capacitors are recommended for optimum stability and transient response and should be located as close as possible to the regulators.

Typical Characteristics

79LXX

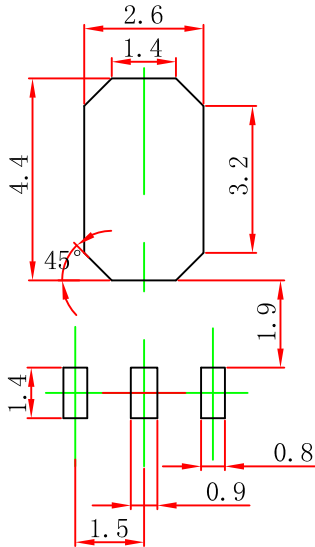


SOT-89-3L Package Outline Dimensions



| Symbol | Dimensions In Millimeters | | Dimensions In Inches | |
|--------|---------------------------|-------|----------------------|-------|
| | Min | Max | Min | Max |
| A | 1.400 | 1.600 | 0.055 | 0.063 |
| b | 0.320 | 0.520 | 0.013 | 0.020 |
| b1 | 0.400 | 0.580 | 0.016 | 0.023 |
| c | 0.350 | 0.440 | 0.014 | 0.017 |
| D | 4.400 | 4.600 | 0.173 | 0.181 |
| D1 | 1.550 REF. | | 0.061 REF. | |
| E | 2.300 | 2.600 | 0.091 | 0.102 |
| E1 | 3.940 | 4.250 | 0.155 | 0.167 |
| e | 1.500 TYP. | | 0.060 TYP. | |
| e1 | 3.000 TYP. | | 0.118 TYP. | |
| L | 0.900 | 1.200 | 0.035 | 0.047 |

SOT-89-3L Suggested Pad Layout



Note:

1. Controlling dimension: in millimeters.
2. General tolerance: ± 0.05 mm.
3. The pad layout is for reference purposes only.