



浩畅半导体
www.szhaochang.cn

78L12 Three-terminal positive voltage regulator

SOT-89 Encapsulate Three Terminal Voltage Regulator

产
品
规
格
书

承
认
书

客户确认：

公司签章：

部门	工程部	品保部	采购部
签名			
日期			

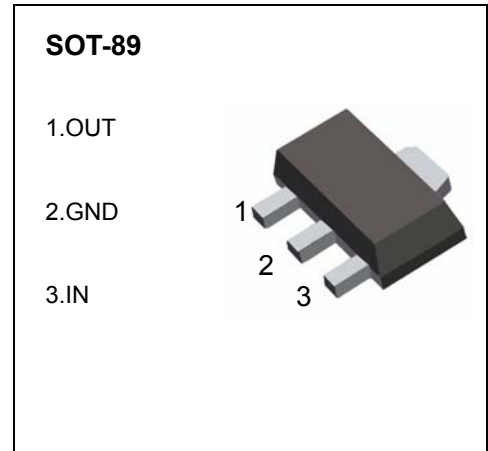


SOT-89 Encapsulate Three Terminal Voltage Regulator

78L12 Three-terminal positive voltage regulator

FEATURES

- Maximum Output current
I_{OM}: 0.1 A
- Output voltage
V_o: 12 V
- Continuous total dissipation
P_D: 0.50 W



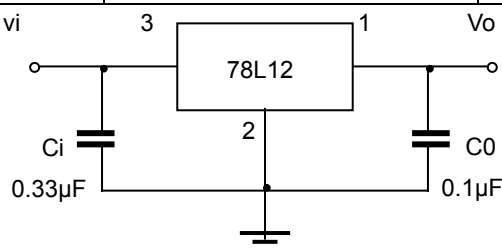
ABSOLUTE MAXIMUM RATINGS (Operating temperature range applies unless otherwise specified)

Parameter	Symbol	Value	Unit
Input Voltage	V _I	35	V
Operating Junction Temperature Range	T _{OPR}	0-+125	°C
Storage Temperature Range	T _{STG}	-55-+150	°C

ELECTRICAL CHARACTERISTICS AT SPECIFIED VIRTUAL JUNCTION TEMPERATURE (V_I=19V, I_o=40mA, C_i=0.33μF, C_o=0.1μF, unless otherwise specified)

Parameter	Symbol	Test conditions	MIN	TYP	MAX	UNIT	
Output voltage	V _o	25°C	11.5	12	12.5	V	
		0-125°C	14V≤V _i ≤27V, I _o =1mA-40mA	11.4	12	12.6	V
			I _o =1mA-70mA	11.4	12	12.6	V
Load Regulation	ΔV _o	I _o =1mA-100mA	25°C	22	100	mV	
		I _o =1mA-40mA	25°C	13	50	mV	
Line regulation	ΔV _o	14.5V≤V _i ≤27V	25°C	55	250	mV	
		16V≤V _i ≤27V	25°C	49	200	mV	
Quiescent Current	I _q	25°C		4.3	6.5	mA	
Quiescent Current Change	ΔI _q	16V≤V _i ≤27V	0-125°C		1.5	mA	
	ΔI _q	1mA≤I _o ≤40mA	0-125°C		0.1	mA	
Output Noise Voltage	V _N	10Hz≤f≤100KHz	25°C	70		uV	
Ripple Rejection	RR	15V≤V _i ≤25V, f=120Hz	0-125°C	37	42	dB	
Dropout Voltage	V _d	25°C		1.7		V	

TYPICAL APPLICATION

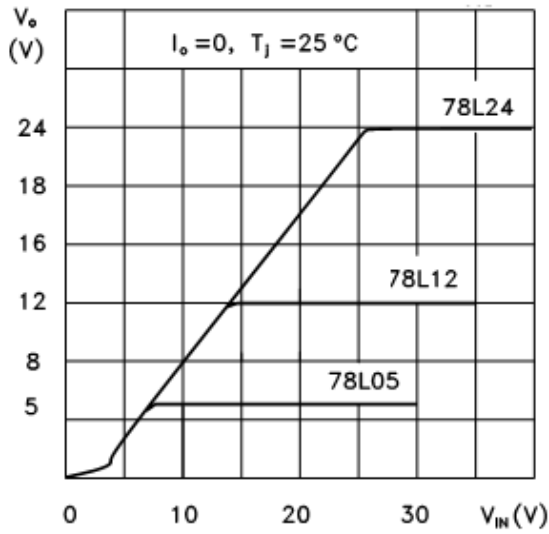


Note : Bypass capacitors are recommended for optimum stability and transient response and should be located as close as possible to the regulators.

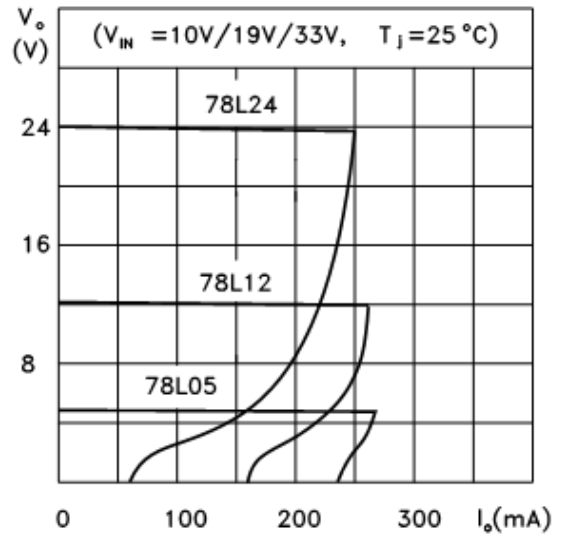
Typical Characteristics

78LXX

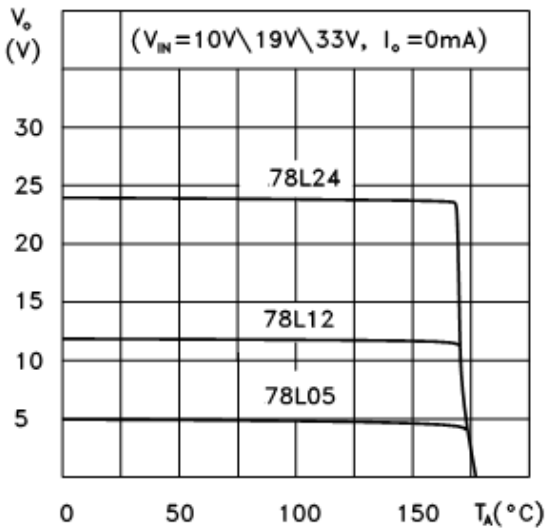
78L05/12/24 Output Characteristics



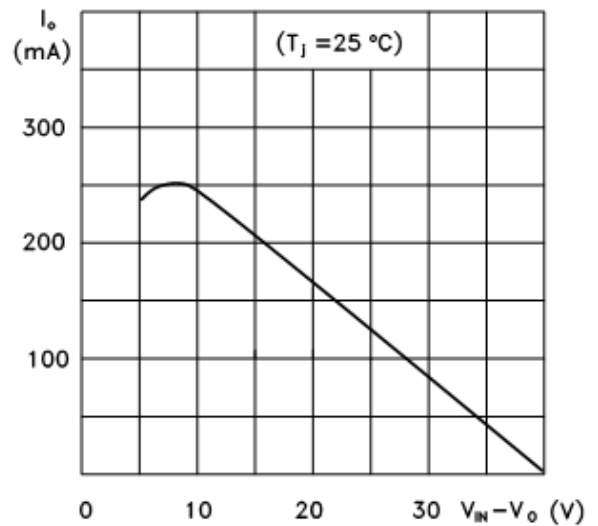
78L05/12/24 Load Characteristics



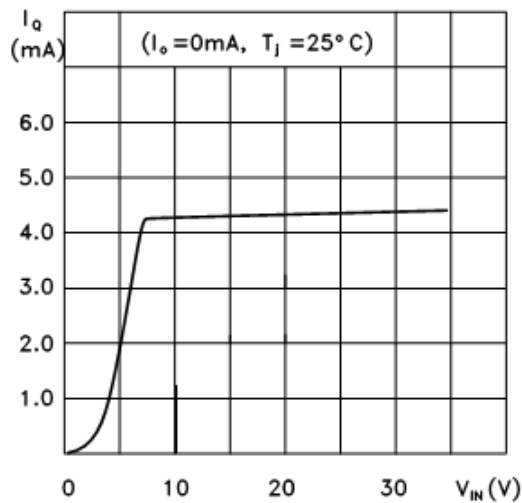
78L05/12/24 Thermal Shutdown



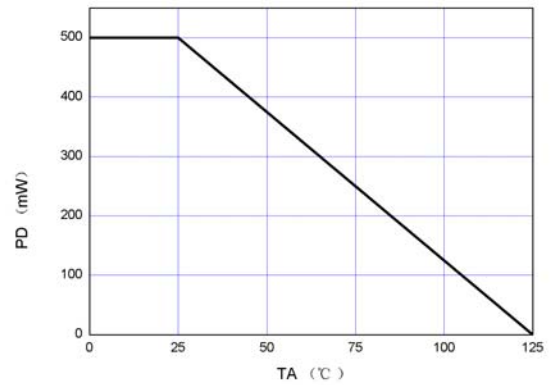
78L00 Series Short Circuit Output Current



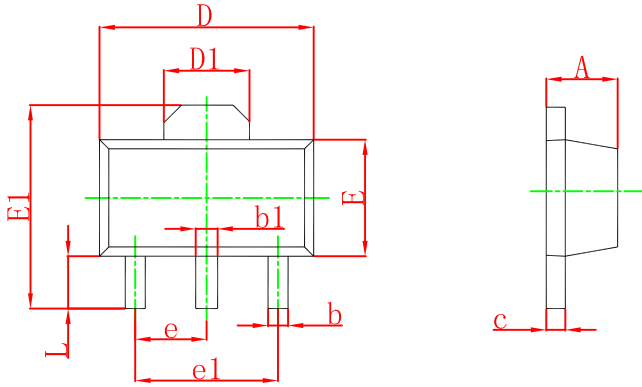
78L05 Quiescent Current vs Input Voltage



PD-TA

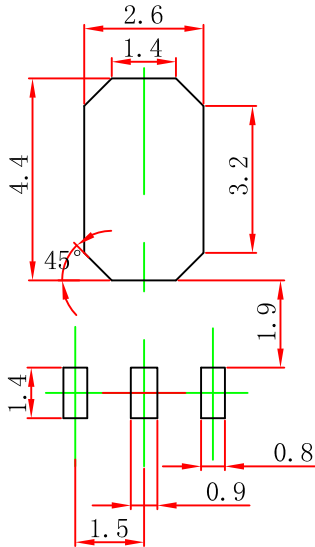


SOT-89-3L Package Outline Dimensions



Symbol	Dimensions In Millimeters		Dimensions In Inches	
	Min	Max	Min	Max
A	1.400	1.600	0.055	0.063
b	0.320	0.520	0.013	0.020
b1	0.400	0.580	0.016	0.023
c	0.350	0.440	0.014	0.017
D	4.400	4.600	0.173	0.181
D1	1.550 REF.		0.061 REF.	
E	2.300	2.600	0.091	0.102
E1	3.940	4.250	0.155	0.167
e	1.500 TYP.		0.060 TYP.	
e1	3.000 TYP.		0.118 TYP.	
L	0.900	1.200	0.035	0.047

SOT-89-3L Suggested Pad Layout



Note:

1. Controlling dimension: in millimeters.
2. General tolerance: ± 0.05 mm.
3. The pad layout is for reference purposes only.